

Bridge Assessment Number 3

Bridge Name	Duncan District
River	Ruby
Bridge Location Description	Duncan District
Bridge Coordinates (Lat., Longitude)	N 45 deg. 26.034 min. W 112 deg. 15.438 min.
Accessibility Assessment (safe as is, safe with work, not safe)	<ul style="list-style-type: none"> • Single Lane Bridge—parking should be reviewed • NE Corner access is ok—best current access • NW Corner is blocked by fence topped with strand of barbed wire • SW corner access is ok but could be improved by removing barbed wire in way • SE Access is obstructed by debris
Notes: (What would make it safe, why is it not safe as is, etc.)	Remove barbed wire at SW corner; find place for creation of road-pullout for 2 vehicles within walking distance.
Name(s) of person conducting review	Dave Delisi, Jerry Kustich, John Eisenbarth
Date of review	4/17/09

Photos:





**Duncan
District_SE
Corner**



**Duncan District--
SW Corner--
Access ok if remove
barbed wire**

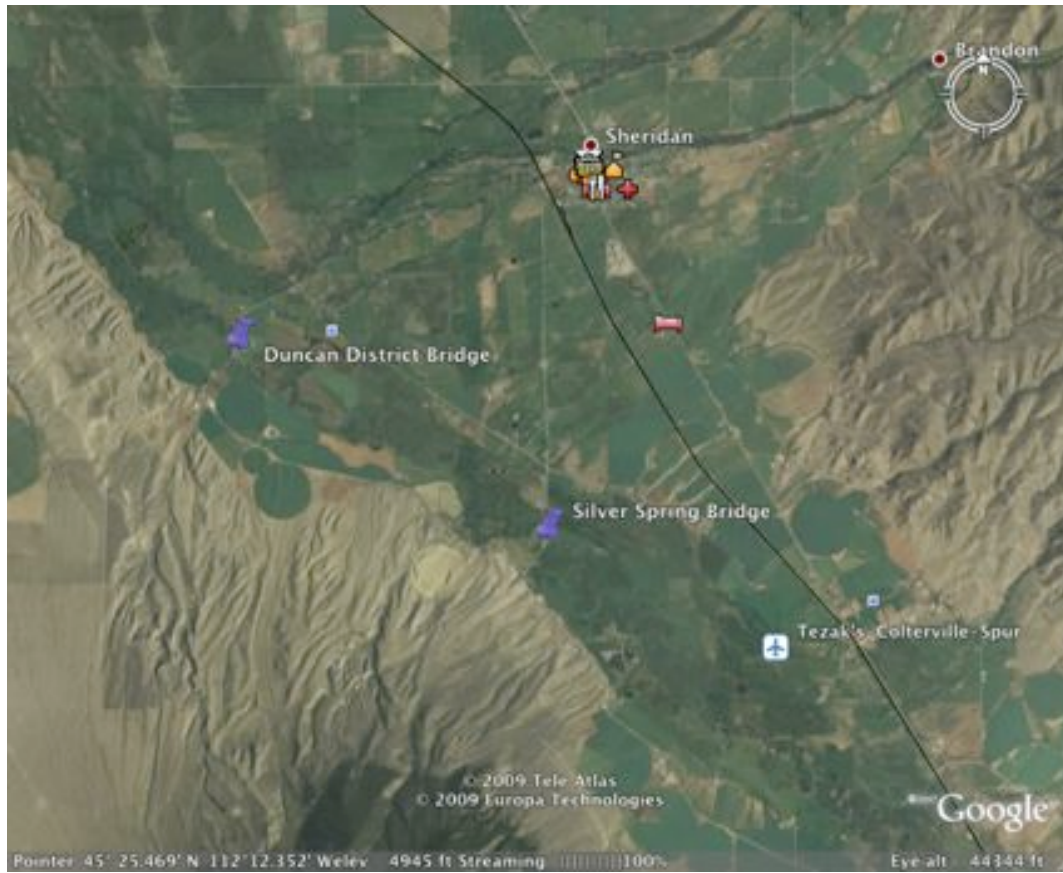


**Duncan District_NW
Corner+ Fence topped
w/Barbed wire and
Debris in Way**

Bridge Assessment Number 4

Bridge Name	Silver Spring
River	Ruby
Bridge Location Description	Silver Spring
Bridge Coordinates (Lat., Longitude)	N 45 deg. 24.685. min. W 112 deg. 12.341 min.
Accessibility Assessment (safe as is, safe with work, not safe)	<ul style="list-style-type: none"> • Safe as is • Currently maintained as an Access Site; parking is excellent and access to river is also good • It must be noted that, as with all fishing Access Sites along the Ruby, Silver Spring is a temporary Access Site permitted by the current landowner from whom the site is leased. Should that landowner change hands, as happened at Coy Brown Bridge Access Site, the public may lose access to that site. Vigilance should be paid to ensure Access Sites such as Silver Spring and Alder Bridge are not lost.
Notes: (What would make it safe, why is it not safe as is, etc.)	
Name(s) of person conducting review	Dave Delisi, Jerry Kustich, John Eisenbarth
Date of review	4/17/09

Photos:



Bridge Assessment Number 5

Bridge Name	Laurin Bridge
River	Ruby
Bridge Location Description	In town of Laurin
Bridge Coordinates (Lat., Longitude)	N 45 deg. 21.160 min. W 112 deg. 7.324 min.
Accessibility Assessment (safe as is, safe with work, not safe)	<ul style="list-style-type: none"> • Good access from 2 of 4 corners; some parking 100 yards west of bridge on south side of road; should be reviewed • SW Corner access is good, although water may be deep during high water events • NW Corner is blocked by abutment that drops 4' vertically • NE corner is blocked by fence and abridge abutment • SE Access is good—unobstructed, clear access to good water
Notes: (What would make it safe, why is it not safe as is, etc.)	Additional parking may be available by parking in town of Laurin; this option should be reviewed
Name(s) of person conducting review	Dave Delisi
Date of review	4/17/09

Photos:



