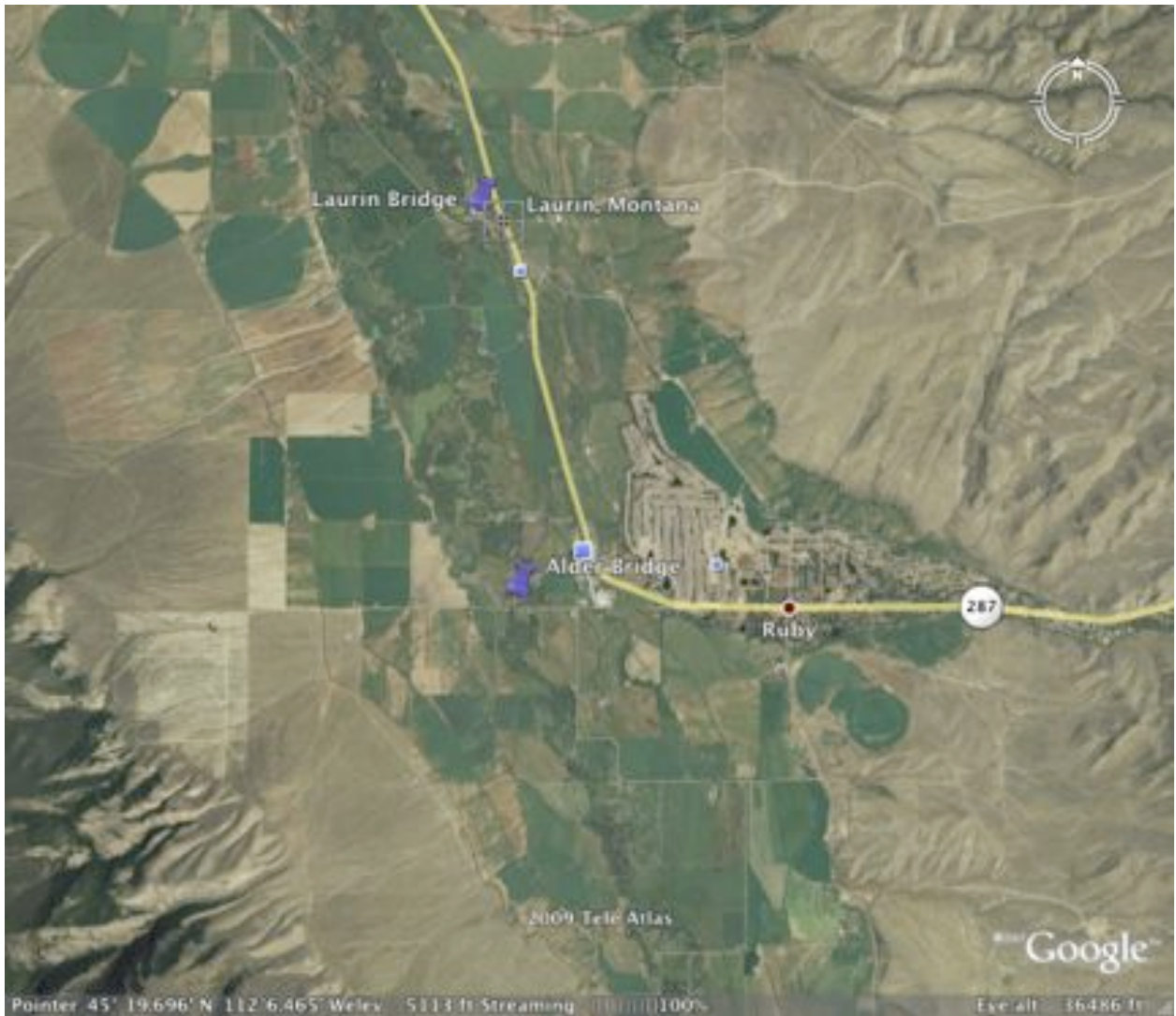


Bridge Assessment Number 6

Bridge Name	Alder Bridge
River	Ruby
Bridge Location Description	Alder Bridge/ Ruby Island Public Access Fishing Site
Bridge Coordinates (Lat., Longitude)	N 45 deg. 19.197 min. W 112 deg. 7.033 min.
Accessibility Assessment (safe as is, safe with work, not safe)	<ul style="list-style-type: none"> • No issues with access as this site is maintained as a public access site. • Note that this is a temporary site, and, as with Silver Spring Bridge, vigilance should be paid to this site to ensure it is not lost should land ownership change hands.
Notes: (What would make it safe, why is it not safe as is, etc.)	
Name(s) of person conducting review	Dave Delisi
Date of review	4/17/09

Photos:



Bridge Assessment Number 7

Bridge Name	Coy Brown
River	Ruby
Bridge Location Description	Coy Brown Bridge, between Alder and Ruby Dam
Bridge Coordinates (Lat., Longitude)	N 45 deg. 17.357 min. W 112 deg. 5.954 min.
Accessibility Assessment (safe as is, safe with work, not safe)	<ul style="list-style-type: none"> • All four corners are fenced, but fence is made of wood and may afford access to those not physically challenged. • Rip-rap may present challenge to some.
Notes: (What would make it safe, why is it not safe as is, etc.)	Stile through fence to prevent damage to fence from people climbing over, and to prevent injury; consider method to avoid anglers walking across the rip-rap.
Name(s) of person conducting review	Dave Delisi
Date of review	4/17/09

Photos:

